



# Santa Clara Libertarian

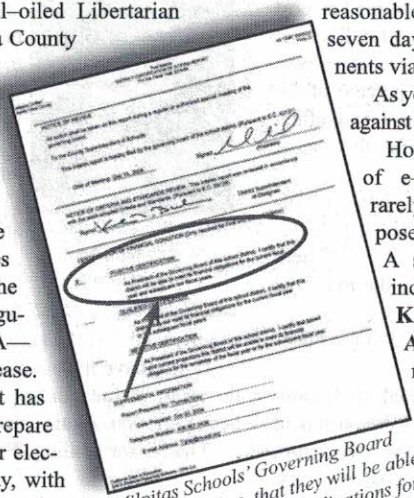
Volume 33, Issue 2 February 2005

News of Local Libertarians' Efforts and Feats

## Milpitans! Vote "No" on A, and Give Officials an F!

by Mark Hinkle, Past Chair of LP of California

Once again, the well-oiled Libertarian Party of Santa Clara County (LPSCC) has led the fight for responsible government spending by opposing a local parcel tax, this time in the Milpitas Unified School District. As we've done with the parcel taxes in every recent election, the LPSCC has submitted arguments against Measure A—yet another local tax increase. While the school district has had months both to prepare for an expensive off-year election (paid for, by the way, with your school tax dollars) and to assemble their team of supporters, any opponents (that's us) are given just seven days to come up with a



Milpitas Schools' Governing Board declared in Dec. that they will be able to meet their financial obligations for no less than the next two years. See Web site for the document.

reasonable argument, and then another seven days to respond to the proponents via a rebuttal.

As you can see, the odds are stacked against us.

However, thanks to the advent of e-mail and facsimiles, we rarely miss an opportunity to oppose the tax-and-spend crowd. A small, but dedicated team, including **Dennis Umphress**, **Kevin Takenaga**, **Allen Rice**, **Allen Hacker**, and myself, regularly submits these arguments. Because we stand a better chance of defeating these measures when we're part of a coalition, we procure signatures also from officers of Silicon Valley Taxpayers' Association and the California Republican

Assembly (Santa Clara chapter) to demonstrate to voters the widespread support of sound fiscal policy for our County.

Years ago, we used boilerplate anti-tax arguments. But lately we've focused better on fighting tax increases by researching the measures, obtaining the facts, creating coalitions, and even placing some ads in local newspapers. Plus, we have a web site specifically for opposition to the parcel tax: [www.VoteNoOnA.us](http://www.VoteNoOnA.us).

As an example of research we're doing to prove that another tax is not needed, take a look at Milpitas Unified's "District Certification of Interim Report" for fiscal 2004/05 ([www.SC.CA.LP.org/ballot/measure\\_a/MUSD\\_Certification.pdf](http://www.SC.CA.LP.org/ballot/measure_a/MUSD_Certification.pdf), 786 KB). In this report—dated no later than Dec. 2, 2004—the Governing Board certified that "this district will be able to meet its financial obligations for the current fiscal year and subsequent two fiscal years."

Officially they tell one tale, but for the public

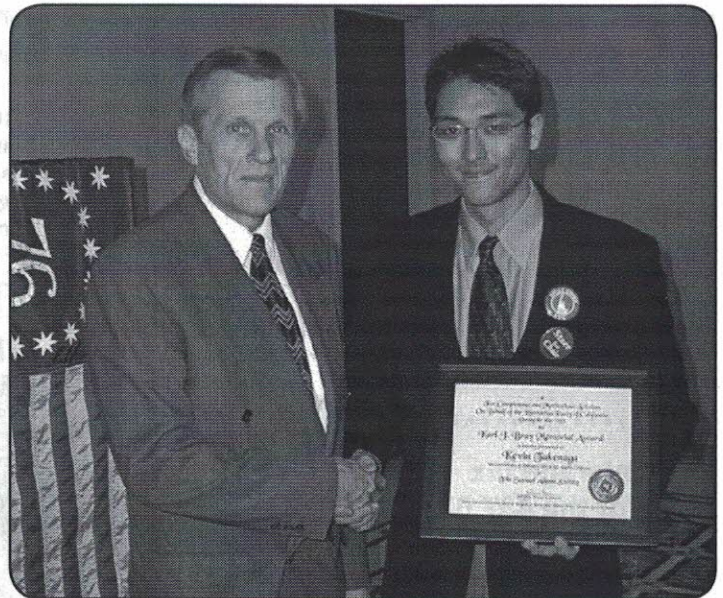
■ See **Milpitans**, page 4

## Award and Seats Won by LPSCC at Calif. Convention

Of course the annual convention of the Libertarian Party of California is the time for state Party business to be conducted, but it is also a wonderful opportunity to dream with fellow libertarians of a freer U.S., to make plans to help that happen, to recognize those working hardest to make that happen, to celebrate our accomplishments, to hear ideas from those making strides in other states, and to have a rollicking good time. Throughout this issue you'll see snapshots of various Santa Clarans participating in the convention.

This year, the highlight for Santa Clara County was the Samuel Adams Society annual awards luncheon, where our own **Kevin Takenaga** was honored with the prestigious Karl Bray Memorial Award for Activism in 2004. The award is designed to honor activists who, because of his or her self-initiated actions, significantly advanced the goals of the LPC, exerting effort above and beyond the call of duty. While serving as Treasurer for the Elect Collier campaign, Takenaga also was Campaigns Chair for LPSCC; he was highly active in the **Badnarik for President** campaign's tour through the Bay Area; and he volunteered at most of our booths at local festivals and rallies.

Takenaga said he felt very gratified just to have been nominated. He reported in retrospect, "I did get a little nudge to be present at the banquet, but I was completely shocked to receive the award." In his acceptance remarks, Takenaga graciously attributed a good deal of the credit to the team back home in Santa Clara County. "This is definitely one of the strongest Libertarian counties in the state," he enthused. "A very effective collaboration—both internally and with



Jack Dean, longtime Karl Bray Award selection committee chair, congratulates this year's honoree, LPSCC's own Kevin Takenaga. (Also on the selection committee are LPSCC member Bill White and 1984 LP Presidential nominee David Bergland.)

■ See **Won Seats**, page 3





**Santa Clara Libertarian**  
News of Local Libertarians' Efforts and Feats

Volume 33 ■ Issue 2 ■ February 2005

Santa Clara Libertarian is the monthly newsletter of the Libertarian Party of Santa Clara County.

**PUBLISHER**

Libertarian Party of Santa Clara County  
P.O. Box 60171 Sunnyvale 94088-0171  
Web site: [www.SC.CA.LP.org](http://www.SC.CA.LP.org)  
Telephone: 1 (877) 872-3007

**EDITOR**

Elizabeth C. Brierly  
E-Mail: [BrierlyServices@Netgate.net](mailto:BrierlyServices@Netgate.net)

**Brierly Services Company**  
P.O. Box 611021 San Jose 95161-1021

**COUNTY CHAIR**

Allen Hacker  
Telephone: (650) 964-4488  
E-Mail: [Allen@LawfulGov.org](mailto:Allen@LawfulGov.org)

**NEWSLETTER COMMITTEE**

Mark Hinkle, Committee Chair  
E-Mail: [Mark@Garlic.com](mailto:Mark@Garlic.com)

**CONTRIBUTORS**

Allen Hacker	Arden Pierce
Mark Hinkle	Hiram Pierce
Jascha Lee	Kevin Takenaga
Sheryl Lee	

**PAST ISSUES**

From 1998 on: [www.SC.CA.LP.org/scf/](http://www.SC.CA.LP.org/scf/)

**COPYRIGHT NOTICE**

Articles, photographs, artwork, copyright 2005 by their author(s) and/or Libertarian Party of Santa Clara County, except where stated as a reprint. All rights reserved.

**LawfulGov.org**

Read our article!  
**Proactive Liberty**  
Free on the Web,  
or \$2.00 by mail.  
ASC/ Lawful Government  
P.O. Box 1000  
Mountain View, CA 94042  
(650) 964-3436

**The average tax rate for the 437,036 individual returns filed for 1916 was only 2.75 percent.**

—National Taxpayers Union

■ Message from the Newsletter Committee Chair

**Why Do You Like to Pay Taxes?**

Tuesday, March 8, is Election Day in Milpitas. The tax-and-spend crowd are up to their usual money grabbing ways...again.

But, for over 22 years, the local Libertarian Party—Santa Clara County chapter—has been writing arguments against parcel taxes and bond issues. Our successes over the years have saved taxpayers literally hundreds of millions of dollars. And, frankly, our failure to stop *some* of these measures has cost us all dearly. Yes, that means millions of dollars.

During the last election, several parcel taxes won or lost by a margin of less than one percent of the vote. That's why it's critical, and really cost-effective, to spend a little money to try to defeat these measures that cost millions.

Recently, we sent out a fund raising letter to Milpitas libertarians asking them for money to help defeat Measure A. We pointed out that it'll cost them \$145 each year for five years. I'll do the math for you: that's \$725.

Would you spend \$75 to save \$725? Our fund-raising letter asked for your help.

Sadly, the response we got was dismal. If Measure A passes, the current 145 registered Libertarians in Milpitas, assuming a 50% rate of home ownership, will collectively pay \$52,562.50 over the next five years. That's money you and your fellow homeown-

ers will not have to house, feed, and clothe yourselves and your families. Money that will be spent by bureaucrats—not by you and your neighbors.

Why do you put up with this?

We know it's not for good schools, because test scores have steadily declined as tax dollars pour into



Photo: Elizabeth C. Brierly

**Mark Hinkle, LPSCC Newsletter Chair; former Chair, LP of California**

the education bureaucracy at rates higher than population growth and inflation. Yes, more is less, when it comes to government-run schools.

Again, why do you put up with it?

Please call the Libertarian Party of Santa Clara County at (408) 243-2711 and tell us why.

Perhaps we're not good at sales and marketing. Perhaps we're too small, or inexperienced, to effect changes in local politics.

If you have the answer, please let us know. Furthermore, if you can help in this battle, we'd like to hear from you. Again, please call (408) 243-2711.

Thanks for reading. ■

—Mark Hinkle

Newsletter Committee Chair

**Listen and Learn: Speaker Events in the Bay Area**

**Golden State Second Amendment Council**  
Speaker: TBD

When: Thursday, Mar. 31, 7:00–9:00 P.M.  
Where: **Harry's Hofbrau**  
390 Saratoga Ave., San Jose  
For info: Jim Barry: (408) 268-4894

**Misers vs. Philanthropists:**

**And the Winner Is?**

Speaker: Dwight Lee

When: Tuesday, May 10, 5:00–7:00 P.M.  
Where: **San Jose State University**  
Morris Daily Auditorium  
For info: [www2.SJSU.edu/depts/economics/](http://www2.SJSU.edu/depts/economics/)

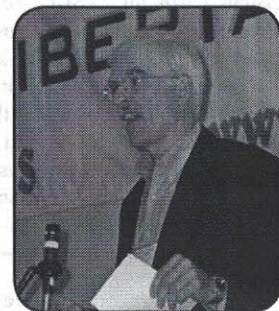
**Libertarian Party Speakers Bureau**

Speaker: TBD

When: Thursday, March 10, 7:00 P.M.  
Where: **Denny's Restaurant**  
1140 Hillsdale Ave., San Jose  
For info: [www.SC.CA.LP.org](http://www.SC.CA.LP.org) ("events")  
LP Activities Chair: (408) 732-1832

**LP of California Convention**  
February 18–20, Los Angeles

LPSCC member **Laura Ferrer** enjoying the convention's kick-off reception, along with her husband, **Allen Hacker**, LPSCC Chair & LPC Executive Committee representative; February 18.



**Ray Strong**, former Chair of LPSCC, giving the report of the LPC Judicial Committee; February 19.



**Won Seats** *continued from Page 1*

key activists in our neighboring counties—supported the local Party’s efforts throughout a very intense election year.”

Takenaga joins ranks with another LPSCC member with boundless energy, **Dennis Umphress**, currently our Membership Committee Chair, presented in 2003 with his Karl Bray award.

Delegates to the 2005 convention made two significant changes to the Party’s bylaws.

First, in light of the Bipartisan Campaign Reform Act of 2002 (BCRA) and its associated reporting requirements, the LPC has made the decision to realign its local chapters according to the new prescription, which is strictly by coun-

ty. This does not affect Santa Clara, whose region has always been coincident with its county. The term “region” will be reserved for subsets of county chapters, where appropriate, such as in Los Angeles County.

Second, the method of electing representatives to the state Executive Committee was changed. Until now, five of the ten reps were elected from and by their region-

siding in the other, smaller regions. Going into effect at this convention, the regional designation has been discarded, and the ten rep positions—now all designated as “at-large”—are split into five 2-year and five 1-year terms.

LPSCC, who had held a whopping four of the fifteen Executive Committee positions last year, managed under the new sys-

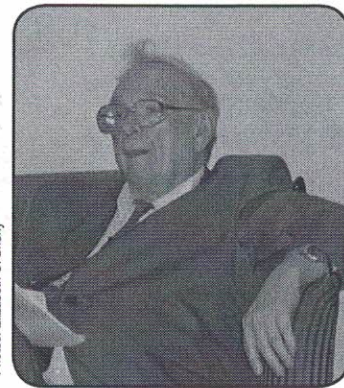
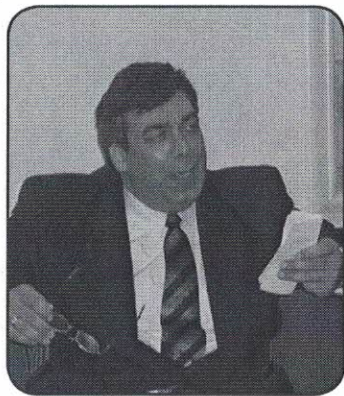
tem to have two of our members win positions: **M Carling** and **Kevin Takenaga**. In addition, former LPC Chair **Mark Hinkle** won a seat on the LPC Judicial Committee.

Takenaga waxed optimistic about the structure and his new

role. “I’m looking forward to working with

al chapters—the five largest regions (which included Santa Clara). The other five reps were elected at-large by the delegates re-


■ See **Won Seats & Award**, page 4



Photos: Elizabeth C. Brerly

LPSCC member **M Carling** (center), co-organizer of this year’s state LP convention, moderated the kick-off event—a debate on the war in Iraq—between 2004 Presidential candidate **Gary Nolan** (left), who argued for U.S. non-intervention, and **John Hospers** (right), the Libertarian Party’s first Presidential nominee (in 1972), arguing that pre-emptive strikes are sometimes necessary and justifiable. Two unofficial polls of the audience, taken at the conclusion of the debate, indicated that Nolan won the debate, and to a lesser degree, that most of the Libertarians present favored non-intervention. February 18, 2005.

Invite your friends to join the **LIBERTARIAN PARTY**: the taxpayers’ best friend!



**The Libertarian Party**  
of Santa Clara County  
P.O. Box 60171, Sunnyvale, CA 94088-0171

**Please print:**

Name: \_\_\_\_\_

Address: \_\_\_\_\_

City/State/ZIP code: \_\_\_\_\_

Phone: \_\_\_\_\_ E-mail: \_\_\_\_\_

**The Libertarian Party** is the party of principle. To assure and affirm that our party never strays from its principles, we *request* our members to sign the pledge below. (Non-signers cannot vote on Party business.)

*I hereby certify that I do not believe in or advocate the initiation of force as a means of achieving political or social goals.*

Signature: \_\_\_\_\_

**MEMBERSHIP APPLICATION**

NEW MEMBER       RENEWAL

\$25 Basic.....\$ \_\_\_\_\_

\$100 Sustaining.....\$ \_\_\_\_\_

\$250 Sponsor .....\$ \_\_\_\_\_

\$500 Patron .....\$ \_\_\_\_\_

\$1,000 Life Member .....\$ \_\_\_\_\_

**MY ADDITIONAL CONTRIBUTION TO LPSCC:**

Monthly pledge:           \$ \_\_\_\_\_

One-time donation:       \$ \_\_\_\_\_

Payment method:

Check: Make payable to **Libertarian Party**

Credit card:

Visa    MasterCard    Discover    (circle one)

Card no.: \_\_\_\_\_

Expiration date: \_\_\_\_\_

Cardholder name: \_\_\_\_\_

Signature: \_\_\_\_\_

Source code: 2003-0343





## Santa Clara Libertarian

Libertarian Party of California State Central Committee  
Libertarian Party of Santa Clara County  
P.O. Box 60171  
Sunnyvale, CA 94088-0171

NON PROFIT ORGANIZATION

U.S. POSTAGE PAID PERMIT NO. 4040

SAN JOSE, CA

**Election Material! Ballot recommendations inside!**  
**Postmaster: please expedite.**

## Milpitans: Vote!

Whether touch-screen or absentee, mark that ballot in the way that most closely reflects your values.

Tuesday, March 8



## Milpitans continued from Page 1

they spin a different story. By their own admission, the money isn't needed now. You have to wonder why they'd spend district funds for a special election in 2005, when waiting for the 2006 general election would save them money and ensure a much larger voter turnout.

Well, here's the straight scoop: a large voter turnout is not what they want. The only voters they want punching ballots or touching screens on March 8 are supporters of the tax increase: teachers' unions, certain trades, businesses that would reap the benefits wildly out of proportion to the tax they'd pay (if they are to pay any at all).

If you live in Milpitas, it's vitally important that on March 8, you vote **no on Measure A**.

If you live elsewhere, but want to ensure there's always a visible opposition to tax increases—whether in your city or countywide—please send a contribution to your local Libertarian Party. A small investment today may save you thousands tomorrow. ■

## Won Seats and Award continued from Page 3

Photo: Elizabeth C. Brierty



**Zander Collier**, LPSCC's Fundraising Committee Chair, mingling with fellow Libertarians at a hospitality suite; Feb. 19.

my fellow elected Executive Committee members on state-level projects, and finding more ways to support the counties at the same time."

There are 58 county chapters and only ten positions; only two counties won more seats than did LPSCC: Los Angeles with five reps, and Ventura with three officers (Chair Aaron Starr, Secretary Daniel Wiener, and new Treasurer Willard Michlin).

Holding two of the 15 positions, and ranking third among the counties affords LPSCC a healthy dose of representation when it's needed. Following LPSCC are, each with one Committee member: Contra Costa, Monterey (N. Vice Chair Lawrence Samuels), Orange County, San Diego, and San Bernardino.

Certainly, the new state Executive Committee will develop its own dynamic, but not without LPSCC's experience and perspective brought to bear. ■

## ARTICULATE MANAGEMENT

MANAGEMENT CONSULTING THAT BUILDS YOUR VISION INTO PLANS, AND YOUR PLANS INTO REALITY.

www.ArtMan.com

(650) 964-4488

## Tinkers Available!

HOME REMODELING AND REPAIRS

CONSTRUCTION PROJECT  
DISASTER RECOVERY

(650) 964-4509