

Libertarian National Committee - Membership Report

"Donor" Totals - Mar-20

4 Year & 12 Month Comparison

	Dec-16	Dec-17	Dec-18	Dec-19	Mar-19	Apr-19	May-19	Jun-19	Jul-19	Aug-19	Sep-19	Oct-19	Nov-19	Dec-19	Jan-20	Feb-20	Mar-20
Active w-MEM	18592	14445	14494	15711	14271	14187	14224	14158	13895	13991	14232	14632	15271	15711	15887	16037	16119
Active w/out MEM	1814	553	514	421	502	501	486	480	479	441	436	423	420	421	431	435	419
Total Active Donors	20406	14998	15008	16132	14773	14688	14710	14638	14374	14432	14668	15055	15691	16132	16318	16472	16538
Percent Change					-0.16%	-0.58%	0.15%	-0.49%	-1.80%	0.40%	1.64%	2.64%	4.22%	2.81%	1.15%	0.94%	0.40%
Lapsed/Drop MEM	1016	1072	1184	844	1050	871	926	856	1132	1080	732	1008	742	844	796	954	944
Lapse w/out MEM	27	23	27	26	23	24	51	17	20	50	24	26	9	26	11	16	25
Lapsed/Drop Total	1043	1095	1211	870	1073	895	977	873	1152	1130	756	1034	751	870	807	970	969
Percent Change					25.64%	-16.59%	9.16%	-10.64%	31.96%	-1.91%	-33.10%	36.77%	-27.37%	15.85%	-7.24%	20.20%	-0.10%
New Donors w-MEM	321	444	159	612	230	180	218	180	219	353	403	533	701	612	388	402	314
New w/out MEM	11	15	14	11	15	15	14	5	17	10	9	6	3	11	12	14	6
New Total	332	459	173	623	245	195	232	185	236	363	412	539	704	623	400	416	320
Percent Change					6.99%	-20.41%	18.97%	-20.26%	27.57%	53.81%	13.50%	30.83%	30.61%	-11.51%	-35.79%	4.00%	-23.08%
Renewed w-MEM	723	651	564	672	797	607	745	610	650	823	570	875	680	672	584	702	712
Renewed w/out MEM	8	4	2	16	7	8	22	6	2	2	10	7	3	16	9	6	3
Total Renewals	731	655	566	688	804	615	767	616	652	825	580	882	683	688	593	708	715
Percent Change					24.07%	-23.51%	24.72%	-19.69%	5.84%	26.53%	-29.70%	52.07%	-22.56%	0.73%	-13.81%	19.39%	0.99%
Total "MEM"	145814	138815	137321	141386	137974	138141	138361	138536	138757	139127	139520	140067	140787	141386	141798	142157	142482
Percent Change					0.18%	0.12%	0.16%	0.13%	0.16%	0.27%	0.28%	0.39%	0.51%	0.43%	0.29%	0.25%	0.23%
Total "LIFETIME"	2571	2618	2652	2725	2668	2674	2679	2686	2687	2689	2698	2709	2717	2725	2730	2731	2736
Total "BSM"	19003	14668	14639	15627	14327	14324	14288	14208	13934	13963	14139	14501	15117	15627	15791	15936	15944

Last Year vs. This Year

	Mar-19	Mar-20	Change	12 Mo Ave	
Active w-MEM	14271	16119	12.95%	14862	<u>Active Donors w-MEM = 16119</u>
Active w/out MEM	502	419	-16.53%	448	<u>Lapsed & Zero Dues MEM = 126363</u>
Total Active Donor	14773	16538	11.95%	15310	<u>Total "MEM" w-Signed Certificate = 142482</u>
Lapsed/Dropped	1073	969	-9.69%	932	<u>Member Signed Certificate = "MEM"</u>
New Donors	245	320	30.61%	385	<u>Total "BSM" = 15944</u>
Renewals	804	715	-11.07%	694	<u>Bylaws Defined Sustaining Member = "BSM"</u>

Mar-20 MEMBERSHIP BY STATE --- ACTIVE AND NON ACTIVE

STATE	TOTAL "MEM"	ACTIVE "MEM"	ACTIVE "SUB"	TOTAL "ACTIVE"	TOTAL "BSM"	STATE	TOTAL "MEM"	ACTIVE "MEM"	ACTIVE "SUB"	TOTAL "ACTIVE"	TOTAL "BSM"
AK	674	73	0	73	73	MT	587	79	2	81	78
AL	1913	217	3	220	215	NC	3675	437	4	441	428
AR	956	103	2	105	104	ND	258	44	4	48	43
AZ	3425	399	10	409	390	NE	690	109	1	110	108
CA	18869	1670	59	1729	1663	NH	1500	201	2	203	196
CO	4044	529	13	542	524	NJ	3081	328	9	337	321
CT	1530	188	7	195	191	NM	1223	159	2	161	158
DC	363	38	2	40	37	NV	1975	219	11	230	216
DE	423	46	4	50	47	NY	5280	785	20	805	773
FL	8646	894	32	926	894	OH	5307	716	10	726	710
GA	6006	473	7	480	466	OK	1181	177	0	177	173
HI	548	50	4	54	48	OR	2294	206	11	217	204
IA	1124	143	2	145	144	PA	6146	680	13	693	675
ID	861	92	2	94	90	RI	322	42	2	44	40
IL	4536	523	15	538	517	SC	2100	250	4	254	249
IN	3519	441	10	451	429	SD	296	50	1	51	49
KS	1222	129	1	130	128	TN	2875	378	2	380	373
KY	1293	161	4	165	159	TX	10161	1284	33	1317	1280
LA	1265	183	3	186	181	UT	1317	149	7	156	143
MA	2878	283	9	292	279	VA	4972	589	13	602	579
MD	2473	306	14	320	299	VT	418	48	4	52	47
ME	851	95	0	95	92	WA	4771	540	16	556	540
MI	5351	511	11	522	504	WI	2201	276	7	283	275
MN	2168	264	4	268	258	WV	645	78	0	78	78
MO	2444	263	9	272	261	WY	345	50	0	50	50
MS	765	94	3	97	91	XX	715	77	11	88	74

SUSTAINING MEMBERSHIP STATE RANKINGS - "BSM"

State	Total BSM	Rank	State	Total BSM	Rank
CA	1663	1	NH	196	27
TX	1280	2	CT	191	28
FL	894	3	LA	181	29
NY	773	4	OK	173	30
OH	710	5	KY	159	31
PA	675	6	NM	158	32
VA	579	7	IA	144	33
WA	540	8	UT	143	34
CO	524	9	KS	128	35
IL	517	10	NE	108	36
MI	504	11	AR	104	37
GA	466	12	ME	92	38
IN	429	13	MS	91	39
NC	428	14	ID	90	40
AZ	390	15	MT	78	41
TN	373	16	WV	78	42
NJ	321	17	AK	73	43
MD	299	18	WY	50	44
MA	279	19	SD	49	45
WI	275	20	HI	48	46
MO	261	21	DE	47	47
MN	258	22	VT	47	48
SC	249	23	ND	43	49
NV	216	24	RI	40	50
AL	215	25	DC	37	51
OR	204	26	XX	74	52
			Total:	15944	

TOTAL	ACTIVE	ACTIVE	TOTAL	TOTAL
"MEM"	"MEM"	"SUB"	"ACTIVE"	"BSM"
TOTALS	142482	16119	419	16538

DEFINITIONS: MEM = Member Signed Certificate

Total MEM = Total # Constituents Per State w-Member Signed Certificate

ACTIVE MEM = Current Dues Paying or Lifetime Donor w-Signed Certificate

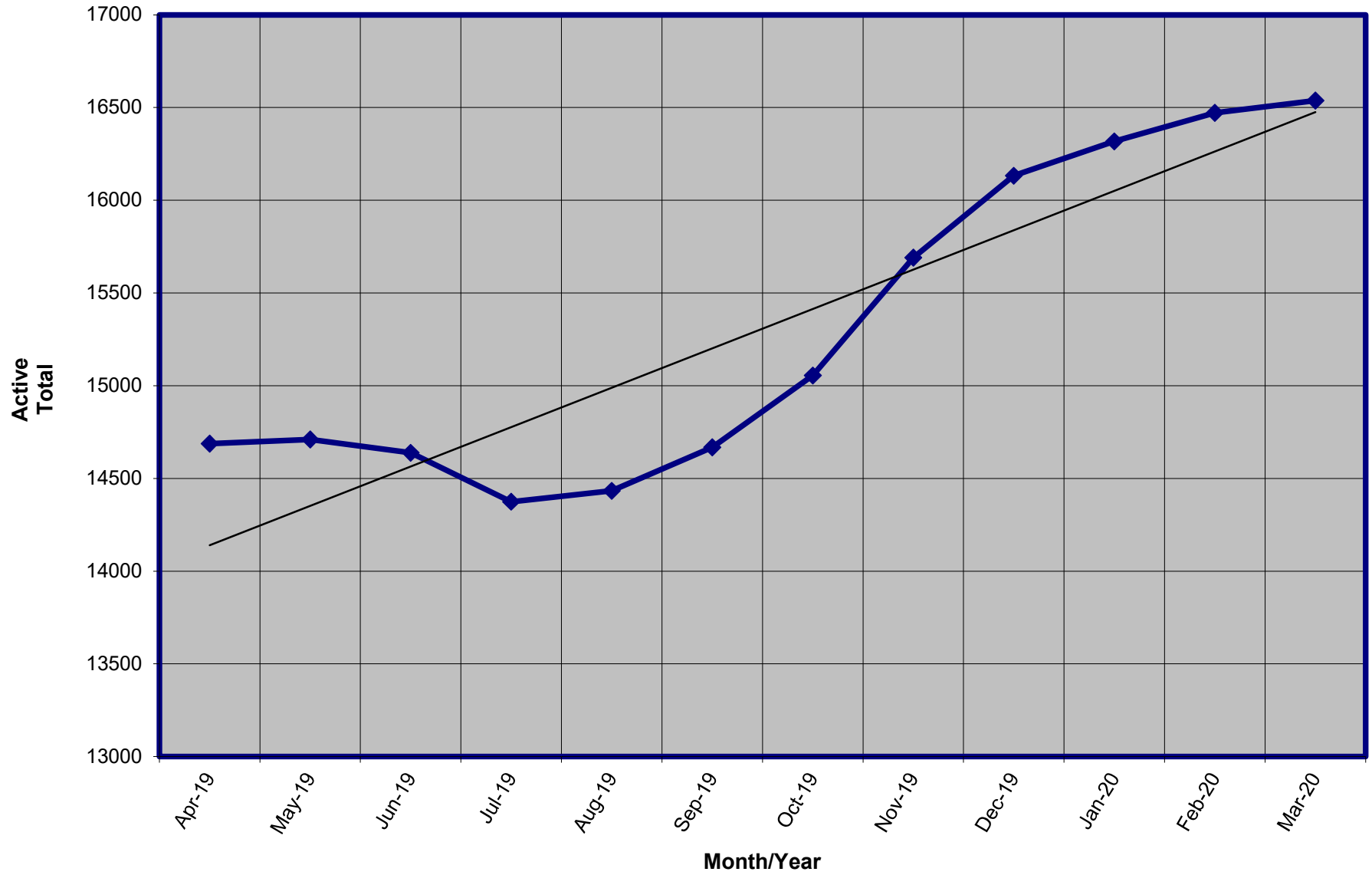
ACTIVE SUB (ACTIVE NON MEM) = Current Dues Paying or Lifetime Donors Who Have NOT Signed the Certificate (Formerly Called "Subscriber")

TOTAL ACTIVE = Current Dues Paying or Lifetime Donor

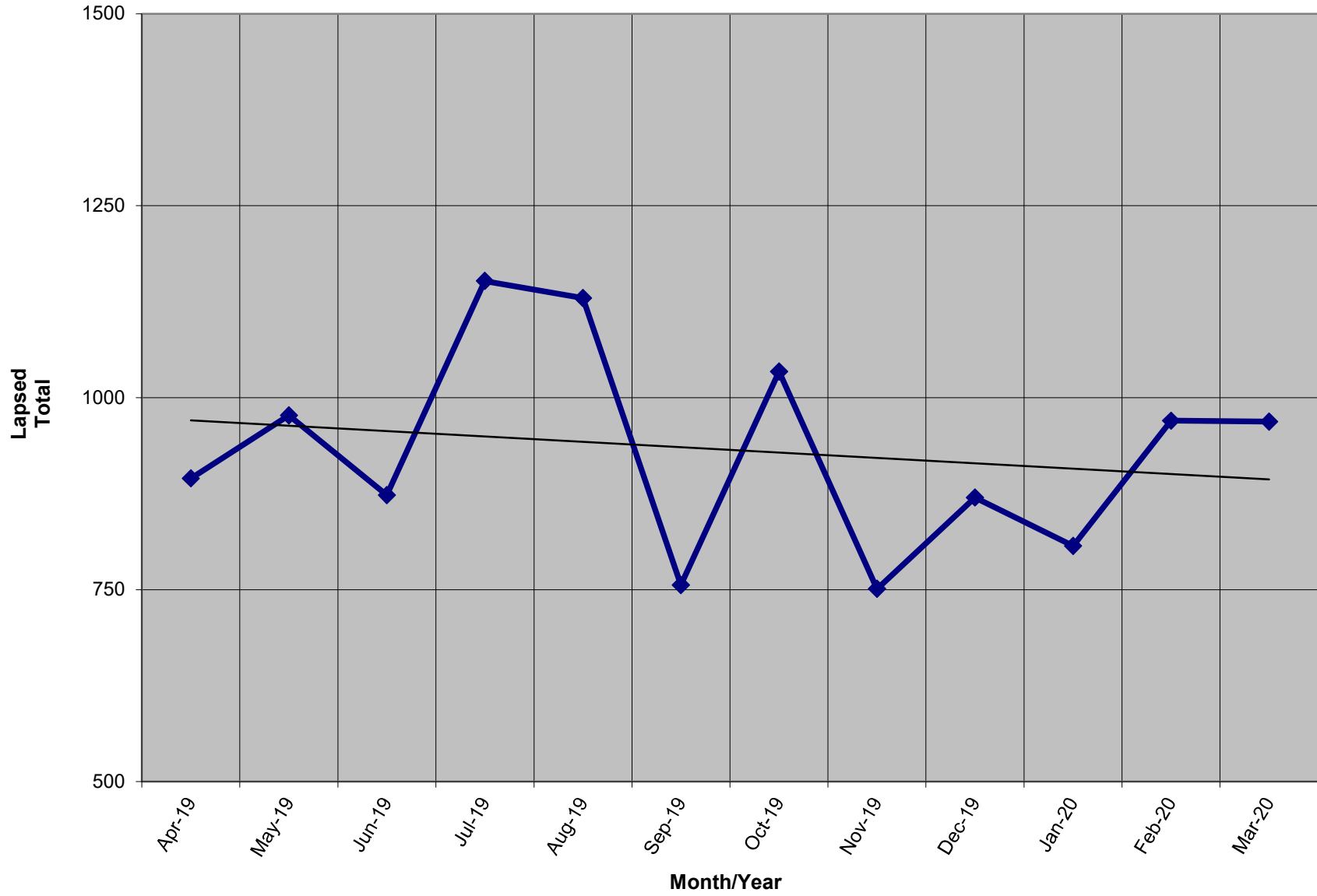
BSM = By Law Definition of "Sustaining Member" and number used for delegate count

(Art 5-3: "Sustaining member" is any Party member who has given at least \$25 to the Party in the prior twelve months, or who is a life member.)

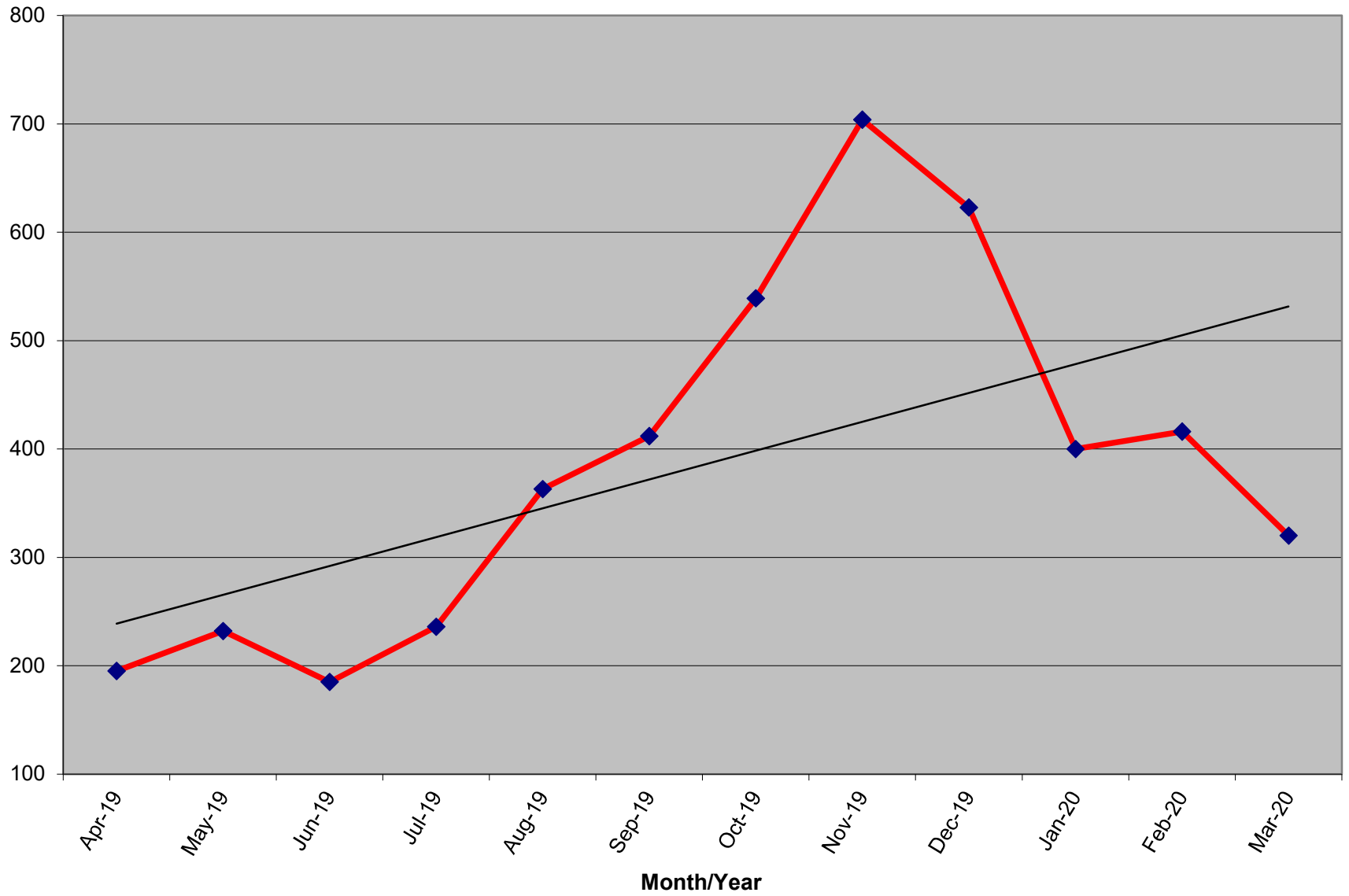
Active Donors - Past 12 Months



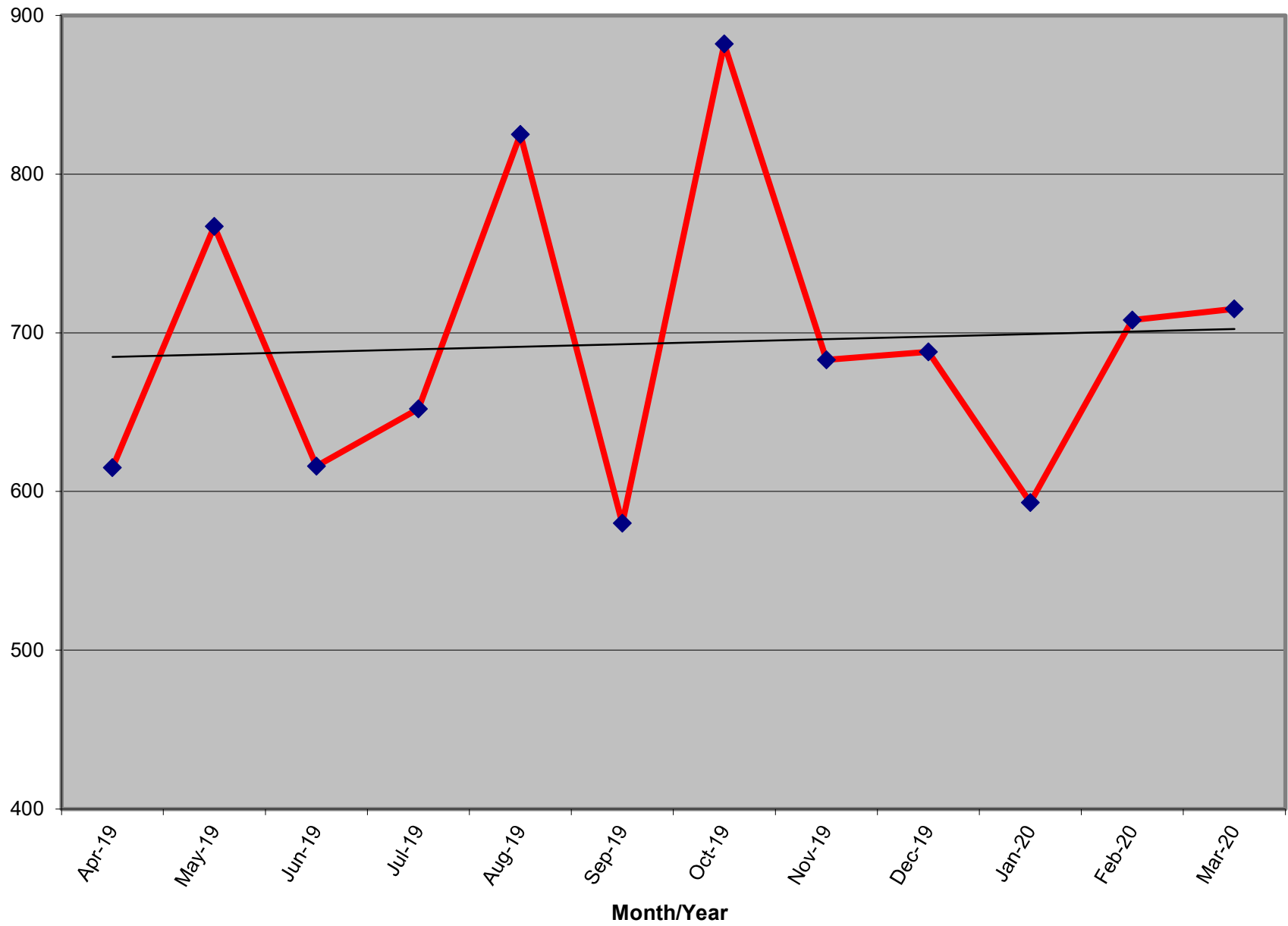
Lapsed - Dropped - Donors - Past 12 Months



New Donors Past 12 Months



Renew Donors - Past 12 Months



% OF ACTIVE MEMBERS VS. REGISTERED LIBERTARIAN VOTERS BY STATE

STATE	TI Reg Voters	Reg Lib	% Reg L to TI Reg	Total Active By State	Active to Registered
AK	520,646	7,593	1.46%	73	0.96%
AL	3,303,122	0	n/a	217	n/a
AR	1,744,141	348	0.02%	103	29.60%
AZ	3,774,016	32,056	0.85%	399	1.24%
CA	20,428,270	176,065	0.86%	1,670	0.95%
CO	3,219,953	36,911	1.15%	529	1.43%
CT	2,199,923	2,912	0.13%	188	6.46%
DC	505,465	1,781	0.35%	38	2.13%
DE	715,019	1,640	0.23%	46	2.80%
FL	13,694,743	31,682	0.23%	894	2.82%
GA	6,443,457	0	n/a	473	n/a
HI	716,458	0	n/a	50	n/a
IA	1,955,058	9,331	0.48%	143	1.53%
ID	801,151	6,482	0.81%	92	1.42%
IL	8,780,685	0	n/a	523	n/a
IN	4,355,147	0	n/a	441	n/a
KS	1,835,367	18,221	0.99%	129	0.71%
KY	3,346,095	8,250	0.25%	161	1.95%
LA	2,972,024	14,569	0.49%	183	1.26%
MA	4,574,967	15,787	0.35%	283	1.79%
MD	3,903,599	20,894	0.54%	306	1.46%
ME	1,028,602	5,554	0.54%	95	1.71%
MI	7,347,955	0	n/a	511	n/a
MN	3,268,360	0	n/a	264	n/a
MO	4,123,266	0	n/a	263	n/a
MS	2,044,713	0	n/a	94	n/a

Registration totals provided by Richard Winger - last update 02/20

STATE	TI Reg Voters	Reg Lib	% Reg L to TI Reg	Total Active By State	Active to Registered
MT	695,971	0	n/a	79	n/a
NC	6,571,602	36,010	0.55%	437	1.21%
ND	429,978	0	n/a	44	n/a
NE	1,203,872	15,029	1.25%	109	0.73%
NH	961,819	0	n/a	201	n/a
NJ	5,778,406	8,874	0.15%	328	3.70%
NM	1,278,953	11,326	0.89%	159	1.40%
NV	1,601,889	16,224	1.01%	219	1.35%
NY	12,695,762	9,757	0.08%	785	8.05%
OH	7,914,320	0	n/a	716	n/a
OK	2,090,107	11,171	0.53%	177	1.58%
OR	2,652,935	18,962	0.71%	206	1.09%
PA	8,609,880	44,848	0.52%	680	1.52%
RI	772,360	0	n/a	42	n/a
SC	3,268,076	0	n/a	250	n/a
SD	550,529	1,893	0.34%	50	2.64%
TN	4,112,566	0	n/a	378	n/a
TX	14,748,880	0	n/a	1,284	n/a
UT	1,446,211	15,393	1.06%	149	0.97%
VA	5,473,173	0	n/a	589	n/a
VT	459,719	0	n/a	48	n/a
WA	4,646,246	0	n/a	540	n/a
WI	5,842,402	0	n/a	276	n/a
WV	1,228,123	5,616	0.46%	78	1.39%
WY	262,620	2,410	0.92%	50	2.07%
XX	356,791	0	n/a	77	n/a
Totals	203,255,392	587,589	0.61%	16,119	2.74%

% OF ACTIVE MEMBERS VS. 2010 CENSUS POPULATION BY STATE

STATE	2010 Census	TI Active By State	Active to Population
AK	710,231	73	0.0103%
AL	4,779,736	217	0.0045%
AR	2,915,918	103	0.0035%
AZ	6,392,017	399	0.0062%
CA	37,253,956	1,670	0.0045%
CO	5,029,196	529	0.0105%
CT	3,574,097	188	0.0053%
DC	601,723	38	0.0063%
DE	897,934	46	0.0051%
FL	18,801,310	894	0.0048%
GA	9,687,653	473	0.0049%
HI	1,360,301	50	0.0037%
IA	3,046,355	143	0.0047%
ID	1,567,582	92	0.0059%
IL	12,830,632	523	0.0041%
IN	6,483,802	441	0.0068%
KS	2,853,118	129	0.0045%
KY	4,339,367	161	0.0037%
LA	4,533,372	183	0.0040%
MA	6,547,629	283	0.0043%
MD	5,773,552	306	0.0053%
ME	1,328,361	95	0.0072%
MI	9,883,640	511	0.0052%
MN	5,303,925	264	0.0050%
MO	5,988,927	263	0.0044%
MS	2,967,297	94	0.0032%

STATE	2010 Census	TI Active By State	Active to Population
MT	989,415	79	0.0080%
NC	9,535,483	437	0.0046%
ND	672,591	44	0.0065%
NE	1,826,341	109	0.0060%
NH	1,316,470	201	0.0153%
NJ	8,791,894	328	0.0037%
NM	2,059,179	159	0.0077%
NV	2,700,551	219	0.0081%
NY	19,378,102	785	0.0041%
OH	11,536,504	716	0.0062%
OK	3,751,351	177	0.0047%
OR	3,831,074	206	0.0054%
PA	12,702,379	680	0.0054%
RI	1,052,567	42	0.0040%
SC	4,625,364	250	0.0054%
SD	814,180	50	0.0061%
TN	6,346,105	378	0.0060%
TX	25,145,561	1,284	0.0051%
UT	2,763,885	149	0.0054%
VA	8,001,024	589	0.0074%
VT	625,741	48	0.0077%
WA	6,724,540	540	0.0080%
WI	5,686,986	276	0.0049%
WV	1,852,994	78	0.0042%
WY	563,626	50	0.0089%
Totals	308,745,538	16,042	0.0052%

ACTIVE TO POPULATION BY RANK

STATE	Rank	TI Active By State	Active to Population
NH	1	201	0.0153%
CO	2	529	0.0105%
AK	3	73	0.0103%
WY	4	50	0.0089%
NV	5	219	0.0081%
WA	6	540	0.0080%
MT	7	79	0.0080%
NM	8	159	0.0077%
VT	9	48	0.0077%
VA	10	589	0.0074%
ME	11	95	0.0072%
IN	12	441	0.0068%
ND	13	44	0.0065%
DC	14	38	0.0063%
AZ	15	399	0.0062%
OH	16	716	0.0062%
SD	17	50	0.0061%
NE	18	109	0.0060%
TN	19	378	0.0060%
ID	20	92	0.0059%
SC	21	250	0.0054%
UT	22	149	0.0054%
OR	23	206	0.0054%
PA	24	680	0.0054%
MD	25	306	0.0053%
CT	26	188	0.0053%

STATE	Rank	TI Active By State	Active to Population
MI	27	511	0.0052%
DE	28	46	0.0051%
TX	29	1,284	0.0051%
MN	30	264	0.0050%
GA	31	473	0.0049%
WI	32	276	0.0049%
FL	33	894	0.0048%
OK	34	177	0.0047%
IA	35	143	0.0047%
NC	36	437	0.0046%
AL	37	217	0.0045%
KS	38	129	0.0045%
CA	39	1,670	0.0045%
MO	40	263	0.0044%
MA	41	283	0.0043%
WV	42	78	0.0042%
IL	43	523	0.0041%
NY	44	785	0.0041%
LA	45	183	0.0040%
RI	46	42	0.0040%
NJ	47	328	0.0037%
KY	48	161	0.0037%
HI	49	50	0.0037%
AR	50	103	0.0035%
MS	51	94	0.0032%
Totals		16,042	0.0052%

* 2010 US Census Figures - does not include PR or other territories or out of US ("XX" states)