

LIB Monthly



The Official Newsletter of the Libertarian Party of California

February 1998

Membership Hits All-Time Record High

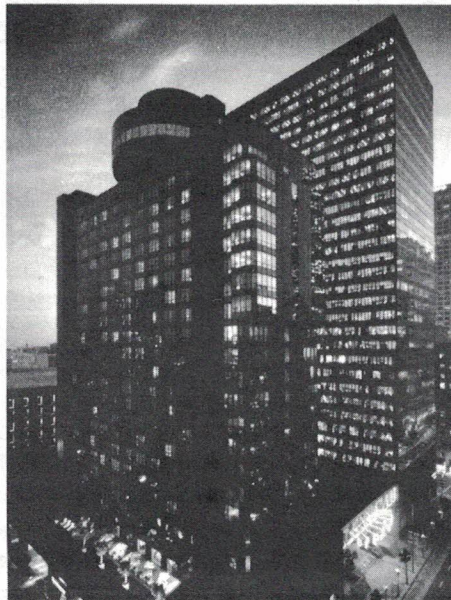
LPC membership surges upward: over 200 new members in two months!

The Libertarian Party of California is pleased to report that its membership has risen to an all-time high. During the last two months, approximately 200 individuals living in California joined the LP, bringing the statewide membership total to about 4,800.

"This is great news," said LPC Chair Mark Hinkle. "We're still about 200 members away from achieving our 1997 goal of 5,000 members, but setting a new record is more than enough reason to celebrate. Our efforts to build our membership, including all the donations from current members that made our mailings possible, are being rewarded."

Hinkle was referring to a massive joint effort by the national and California Libertarian Parties to build membership, the cornerstone of which was multiple and coordinated mailings to thousands of registered Libertarians and lapsed members. Responses from the mailings have peaked but are still trickling in.

"I'd like to take this opportunity to warmly and enthusiastically welcome all of our new members to the LPC," said Hinkle, "and to invite them to step forward now and introduce themselves. The best way to meet other Libertarians is by attending one of your local region's business meetings or social gatherings. Just contact your regional Chair for details [see page 11]. And, of course, we'd love to see as many new faces as possible at our convention" (continued on page 4)



The Hyatt Regency in downtown L.A. — site of the LPC Convention.

Last Call For Convention!

The LPC's 1998 Convention to convene in Los Angeles

This month, the Libertarian Party of California holds its annual convention — the organization's largest and most important event of the year. Libertarians will be traveling from all over the state to conduct party business and celebrate the blessings of liberty — will you be one of them? We hope so!

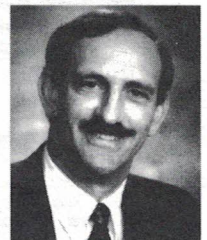
The convention takes place over Presidents Weekend, February 13-16, at the Hyatt Regency Hotel in downtown Los Angeles. The Hyatt is offering special accommodation rates for those traveling from out of town. You can purchase tickets to the convention in advance or at the door. (See page 6-7 for more details.)

"We've worked (continued page 3)

Rider Enters "Winnable" S.D. Election

Well-known activist optimistic about his chances in bid for San Diego Treasurer

Veteran LPC activist Richard Rider has announced that he is seeking election to the nonpartisan office of San Diego County Treasurer/Tax Collector — a race Rider says he has an unusually good chance of winning.



Richard Rider

"The incumbent is 72, tainted by past scandals and faltering on running," Rider explains. "Several lifetime bureaucrats will be candidates, including the Carlsbad and San Diego city treasurers. I think that with all the notoriety I've received these past two years, I have a good chance of not only making the June candidate runoff but actually winning the November election! This type of financial office is made to order for Libertarians in general and me in particular."

Rider is one of the (continued page 9)

I N S I D E

- ▶ Manny Klausner
- ▶ "NOTA" Movement
- ▶ State Smoking Ban
- ▶ Columns, Letters & More!

February 1998

Publisher & Editor
Perry Martin

Associate Editors
Joseph W. Dehn III
David Dorfman

Contributors
Tammy Austin
Jack Dean
Michael Edelstein, Ph.D.

Mark Hinkle
Manny Klausner
Steve Lillenthal
Dan Litwin
Laura McFadden
Richard Rider

Graphic Design
Just Imagine

Mailing Address
LPC Monthly
P.O. Box 2193
Hollywood, CA 90078

E-Mail Address
LPCMonthly@aol.com

Fax Number
(213) 876-3597

On-Line Edition
<http://www.ca.lp.org/lpcm/>

Next Deadline
February 15, 1998

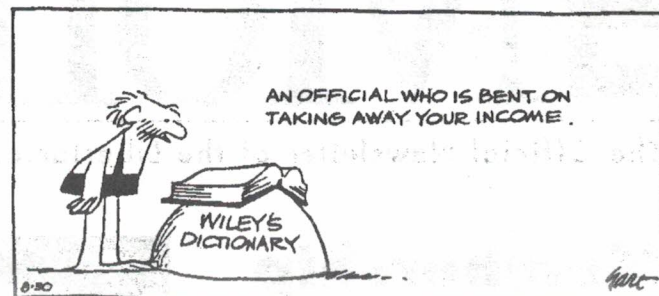
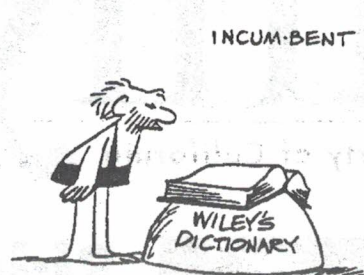
LPC Monthly is the official newsletter of the Libertarian Party of California. Opinions contained herein do not necessarily represent official party positions unless indicated.

LPC Monthly is published twelve times a year. Individual copies are available at \$0.25 each. Subscriptions are \$5 per year.

Send materials for publication to LPC Monthly's mailing address. All submissions are subject to editing. Deadline is the fifteenth day of every month.

Send changes of address to: Libertarian Party of California, 655 Lewelling Blvd. #362, San Leandro, CA, 94579.

LETTERS



Of Myth and Men

I was pleased to see the review of Warren Farrell's "The Myth of Male Power." [June 1997] You may also wish to read his earlier book, "Why Men Are The Way They Are."

This book describes the ways in which men's socialization to fulfill the primary sex-role fantasy of women ends up becoming a barrier to understanding between men and women. It discusses reasons why it is a false analogy to equate the women's movement with the civil rights movement. And it contains an on-target description of what constitutes pornography for females, the surprisingly huge amounts of it that women consume (it makes *Playboy's* numbers look piddling), and how it trains them to have unrealistic fantasy expectations for men.

mids@MCI2000.com

Mitigating Circumstances

We seem to be suffering with mitigation fee oppression in Tuolumne County. Waiving fees for selected projects distorts our economy: property owners must cater to the political minority rather than respond to the needs of people.

While it is proper for a developer to be responsible for infrastructure costs directly relating to the project, it is not so to tax the landowner for anticipated future government costs.

When people use a government-provided service, they ought to pay for it in the most direct manner possible. Government has a tendency to waste money and, by having funding closely related to use, political and bureaucratic influence is kept to a minimum. If there could be such a thing as a fair tax, the gas tax would come close—provided the money was used for roads.

Someday, enlightenment and technology will bring about complete privatization of roads, but for now, it seems best to: 1) Drop the extended mitigation fee system; 2) Reduce waste in road maintenance by contracting out; and 3) Use long term financing for infrastructure development.

ALBERT J. SEGALLA
Twain Harte, CA

Racial Preferences At Law Schools

Frequently omitted from the debate on racial preferences in universities and graduate schools is data concerning the impact of the programs on minority applicants who receive preferences. Isn't it useful to consider how well affirmative-action beneficiaries perform?

As shown by recent litigation involving the University of Texas and current litigation involving the University of Michigan, proponents of racial preferences in academic admissions typically try to conceal the weight given to racial preferences—and they refuse to disclose performance data concerning minority students who are admitted through racial preferences.

If affirmative-action beneficiaries who are accepted into elite law schools have a relatively high rate of attrition—and, of those who graduate, a relatively higher percentage fails the bar examination—compared with students who are not admitted based on racial preferences—shouldn't this information be disclosed by the law schools?

Should such information be withheld even from the minority students who are selected for admission—despite the higher risk that the likelihood of their ever practicing law is much lower if they attend a school where they are less well prepared to compete effectively than their classmates who are admitted on the basis of their LSAT scores and grade point averages?

It seems fair to conclude that the deliberate concealment of such data reflects a commitment of racial preference proponents to favor programs over people.

MANNY KLAUSNER
Los Angeles, CA

Send your letters to:

LPC Monthly

P.O. Box 2193

Hollywood, CA 90078

E-Mail: LPCMonthly@aol.com

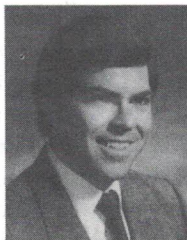
Manny Klausner to Speak

Activist to address Sam Adams Society at LPC Convention

Longtime Libertarian Party activist Manny Klausner will be the guest speaker at the seventeenth annual Samuel Adams Society luncheon on Monday, February 16 at the LPC Convention, announced Jack Dean, the organization's founder. Klausner will address the issue of how to work with non-libertarian groups without compromising libertarian principles.

The luncheon will be the last scheduled event of the convention, which is being held on Presidents' Weekend at the Los Angeles Hyatt Regency. (For more details, see ad on page 6-7.)

Klausner is a Los Angeles attorney specializing in business litigation, includ-



Manny Klausner

ing securities law, intellectual property and constitutional law matters. He is also chairman of the Libertarian Law Council. In 1996, he was Vice-Chairman of the successful and controversial Yes on Proposition 209 Committee — the California Civil Rights Initiative (CCRI). A founding editor of *Reason* magazine, he is also a Vice President and Trustee of the Reason Foundation.

Klausner's talk will be followed by a candidate recognition program and possibly a presentation of the coveted Karl J. Bray Memorial Award for Activism to one of the Libertarian Party of California's "unsung heroes" of 1997.

Master of ceremonies will be Jack Dean. A past (continued on page 9)

Last Call for LPC Convention!

(continued from page 1)

hard to make this the best LPC Convention ever," said organizer Laura McFadden, "and I think we've succeeded. We have a really exciting line-up of speakers, including five of the six living LP presidential candidates: David Bergland, Harry Browne, Ed Clark, John Hospers and Congressman Ron Paul. We're also going to have many Libertarian office holders, including Sandi Webb, (Simi Valley City Council), Bonnie Flickenger (Mayor Pro Tem of Moreno Valley) and Art Olivier (Mayor Pro Tem of Bellflower). Gene Burns, one of the most popular libertarian radio personalities in the country, will be the host of our Grand



Laura McFadden

Banquet on Saturday night. And Larry Elder, who has a top-rated L.A. radio show and is often seen on national TV, will be making his very first appearance at a Libertarian event. Of course, there will be many other guest speakers as well, covering a variety of subjects of interest to Libertarians. We think it's a great line-up."

McFadden continued: "The Hyatt is a beautiful hotel and conveniently located near the freeways, which lead to all the other attractions L.A. has to offer — movie studios, museums, shopping centers, theme parks, beaches and more."

If you are a veteran activist, you won't want to miss this major event. If you have never attended an LP event before, this is a perfect opportunity for you to step forward, introduce yourself and make some new friends.

For more information about the LPC's 1998 Convention and to purchase tickets in advance, contact Laura McFadden at (562) 428-8113.

Media inquiries should contact Juan Ros at (818) 980-8833.

To volunteer to work the convention, contact Olga Cruz at (213) 259-9952. ■

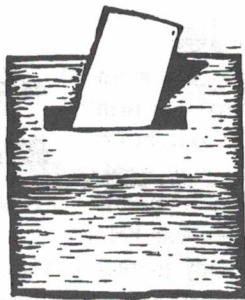
"NOTA" Movement

Working to place "None of the Above" option on ballots

by Steve Lilienthal

American voters are supposed to have choices between — at the very least — two candidates offering contrasting philosophies. However, all too often, their choices are severely circumscribed because today's political campaigns have become contests, not of ideas, but of poll ratings and fundraising prowess.

That is why the LP platform states: "in order to grant voters a full range of choice in federal, state and local elections, we propose the addition of the alternative 'None of the Above' is acceptable to all ballots. We further propose that in the event that 'none of the above' is acceptable receives a plurality of votes in any election, the elective office for that term should remain unfilled and unfunded."



We at the Free Congress Foundation agree — and are working to make that goal a reality.

Too many American voters feel like bystanders helpless against scandals, broken campaign promises, and the influence of special interest groups. There is a solution: give them the option to vote

"None of the Above."

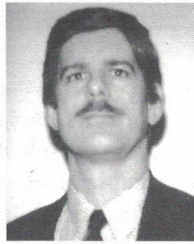
Voting for NOTA is an expression of the belief that citizens should be able to elect worthy leaders. When the choice, as in Louisiana's 1991 gubernatorial election, is between a David Duke, with his dubious past, and an Edwin Edwards, whose years in office were tainted by corruption, voters need NOTA. They also need NOTA in elections in which incumbents scare off credible opposition by relying on PACs, (continued on page 4)

From The Chair:

One Down, Two to Go

by Mark Hinkle

Shortly after most of you receive this newsletter, the Libertarian Party of California's 1998 Convention will convene. That event will mark my one year anniversary as Chair of the LPC, and my establishment of the following goals:



Mark Hinkle

1. Increase our dues-paying membership to 5,000
2. Raise \$150,000 in revenues
3. Hire at least one paid employee, working in an office

As you all know by now, we accomplished our second goal — and overshot it by a wide margin. At the time we go to press, it appears that our 1997 revenues totaled approximately \$175,245. When I first announced that raising \$150,00 was one of our primary goals, many people thought it was unrealistic. Thank you for proving them wrong! This year, our fundraising goal is even more ambitious: \$350,000. I'm sure that, once again, some will say that such a figure is unattainable; but I am also sure that you will, once again, prove otherwise!

I mentioned in my previous column that I expected us to come up short on our membership goal. We did, but not by much — and we are now at an all-time record high! How many members is that? Well, that's an easier question to ask than answer because there are actually several definitions for what constitutes an LPC member...

The national LP reports that, as of January 11, the total LP membership in California is 4,893 (4,519 members and 374 subscribers to *LP News*).

That figure differs from the LPC's own numbers. Joe Dehn, who maintains the LPC's database, reports that our membership totals 4,808 (4,519 members

plus county central committee members and out-of-state members). The LPC doesn't count newsletter subscribers as members, nor those individual who don't sign the pledge; hence the discrepancy in numbers.

As for our goal of hiring a paid employee, I've interviewed three of the four candidates who've submitted resumes to me. Since we are going to hire these employees via an Employment Leasing company, I will need to submit this item to the LPC Executive Committee for a vote. Even though the funding for this position was included in the 1998 LPC budget, passed by the Excom at its last meeting, I think the committee is waiting for the LPC Convention before moving forward with it. I believe they want to see if you will come through with the financial support needed to make the employees permanent and full-time; to do that, we need to have adequate funds in the bank and coming in via pledges to insure that we will be able to meet our payroll obligations for the foreseeable future.

It is the responsible thing to do.

It also should show how important your pledges are to our party's growth and, by extension, our ability to fight for the political changes that you want. Pledging your regular financial support is one of the single best ways you can help the party. If you are not already participating in our pledge program, please sign up today. It's easy — you can use the form on the back of this newsletter.

As for opening an office...The LP of Santa Clara County has passed a resolution endorsing the idea of sharing an office with the LPC and for splitting the rent and insurance costs. I'm confident we can hammer out the details to both organizations' satisfaction.

In closing, let me say that I hope to see you at the LPC Convention. We're working hard to make it our biggest and best convention yet. ■

Membership Hits Record High

(continued from page 1)

this month!"

Growing membership is a central goal of the California and national Libertarian Parties. "Everything comes from growth," national LP Chair Steve Dasbach recently said. "More members means more money, more candidates, more media attention, more votes, more elected Libertarians. The bigger we are, the more we can accomplish. It's as simple as that."

Hinkle encouraged LP members to follow a suggestion recently made by the party's 1996 Presidential candidate, Harry Browne: "Offer to buy a sympathetic friend or relative a membership in the Libertarian Party — if they will agree to consider renewing their membership themselves when the time comes."

Returning to the subject of the party's recent growth spurt, Hinkle said: "It's important and appropriate for all of us to pause for a moment to pat ourselves on the back — then return to the work at hand: achieving our goal of building our ranks to 5,000 members." ■

"NOTA" Movement

(continued from page 3)

fat cats and their own fat wallets. NOTA empowers voters to demand the best — not simply settle for whatever they are given.

The American experiment succeeded because it allowed citizens the right to determine their own destinies. Now, when the voter's faith in our system has been shaken, we need to give new meaning to the principles upon which our country was founded.

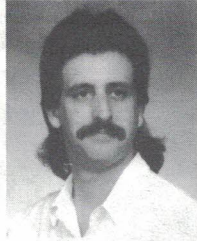
For more information about NOTA, contact the Free Congress Foundation at 717 Second St. NE, Washington DC, 20002, or by phoning (202) 546-3000. ■

Opt-Ed:

Snuffing Property Rights

by Dan Litwin

As 1997 came to a close, one of the hottest political issues for California was the ban on smoking in all bars, which took effect on January 1st.



Dan Litwin

Many people debated the issue. We heard that smokers have rights; we heard that non-smokers have rights. We heard that second-hand smoke kills; we heard that second-hand smoke is not as dangerous as the doom-sayers insist. Some claimed that business in bars would go down; others were sure it would go up. While all of these concerns are relevant, they are only side issues.

The core issue was absent from the dialogue. To understand, consider the

following scenario: A man retires after working 40 years in a factory. He's not trendy. He wears those sleeveless undershirts. A cheap cigar hangs out of his mouth. He's saved up a few hundred thousand dollars to purchase his retirement dream: a neighborhood bar. You know the one...two pool tables, three pinball machines, beer on tap and pretzels.

Now, after saving for a lifetime, he and his customers don't have the right to smoke in his new bar.

Is that bar *his*? Or has government taken total control of it? If it was our cigar-smoking friend's property, the law would support his right to set his own

rules regarding smoking.

The central issue in the smoking ban debate was property rights. But no one in any position of influence put forth the argument. The idea has vanished from discussion.

The fact that those on the political left don't concern themselves with property rights didn't surprise me as much as the silence from the right — traditionally supporters of private property.

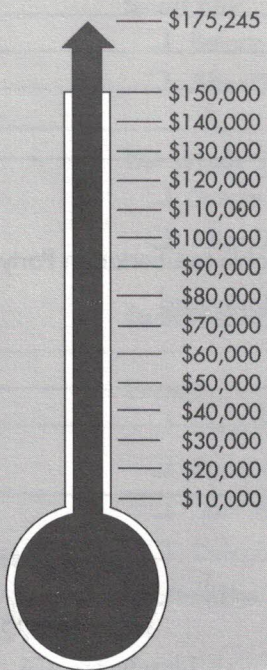
Then I learned a lot about why conservatives didn't argue the smoking ban from the property rights stance from an on-air conversation I had with talk-radio host and ex-San Diego Mayor Roger Hedgecock...

When I insisted that the issue boiled down to property rights, Hedgecock said, "We lost this fight a long time ago" because bars are required to enforce numerous laws. I persisted, saying that this is *(continued on page 9)*



Revenue

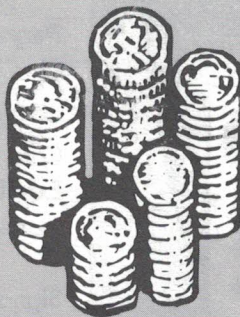
Current: \$175,245
Year End Goal: \$150,000



Growth Watch: December 1997

Pledges & Donations

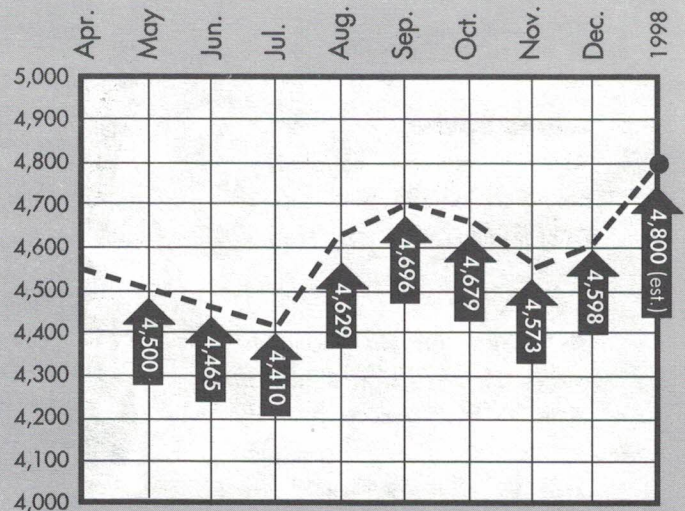
Totals for December
Pledges: \$2,552
Donations: \$28,442



Help Us Grow! To make a monthly pledge or one time donation, use the form on back of this newsletter, or call (408) 243-2711 x33.

Membership

Current: 4,800 (est.) Year End Goal: 5,000



Help Us Grow! Ask just one friend or coworker to join the Libertarian Party in 1997 -- or offer to pay their dues the first year if they will consider paying them when it comes time to renew!

You're invited
to the...

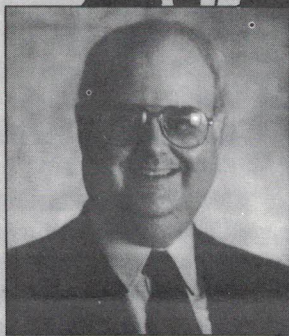
Libertarian Party

Guest speakers include...

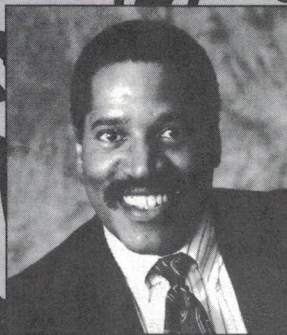
1998

February

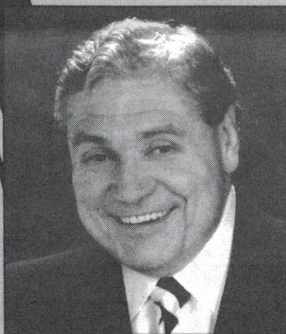
in Los Angeles



Steve Dasbach
LP National Chairman



Larry Elder
Top rated L.A. talk radio host



Gene Burns
Nationally syndicated talk
radio show host



Ed Clark
1980 LP Presidential Candidate

Convention Packages

Super Saver

All speakers except banquet.

Before 01/31/98 price\$84

After 01/31/98 price.....\$98

Smart Buy

All speakers including banquet.

Before 01/31/98 price\$119

After 01/31/98 price.....\$149

The Whole Shebang

Speakers, banquet, reception
and Sam Adams Lunch

Before 01/31/98 price\$197

Yes! I'm coming to Los Angeles

**The Libertarian Party of California
1998 CONVENTION**

Name _____

Address _____

City _____

State/Zip _____

Phone _____

Payment:

Check (payable to Libertarian Party of California)

Visa Mastercard

Card Number _____

Exp. Date _____

Name On Card _____

Signature _____

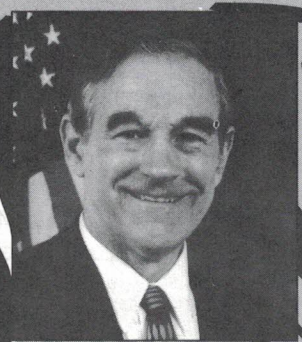
Send to:

Libertarian Party of California
P.O. Box 17212
Long Beach, CA 90807

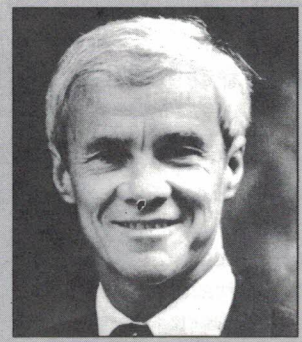
Party of California's Convention

January 13-16

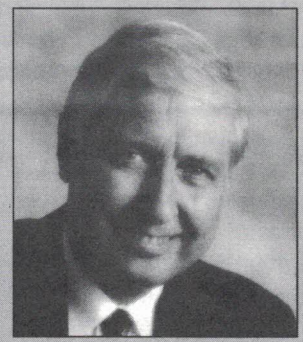
Los Angeles



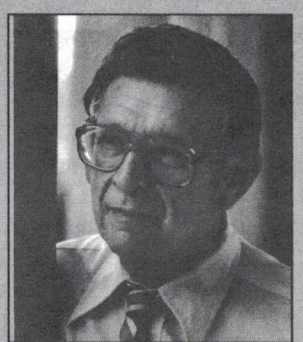
Ron Paul
Congressman and 1988
LP Presidential Candidate



David Bergland
1984 LP Presidential Candidate



Harry Browne
1996 LP Presidential Candidate



John Hospers
1972 LP Presidential Candidate

Convention Packages

Super Saver	Qty.	Price	Subtotal
<input type="checkbox"/> Before 01/31/98..	_____	x \$84 =	_____
<input type="checkbox"/> After 01/31/98....	_____	x \$98 =	_____

Smart Buy	Qty.	Price	Subtotal
<input type="checkbox"/> Before 01/31/98..	_____	x \$119 =	_____
<input type="checkbox"/> After 01/31/98....	_____	x \$149 =	_____

The Whole Shebang	Qty.	Price	Subtotal
<input type="checkbox"/> Before 01/31/98..	_____	x \$197 =	_____
<input type="checkbox"/> After 01/31/98....	_____	x \$213 =	_____

Individual Tickets

Event	Qty.	Price	Subtotal
<input type="checkbox"/> Reception.....	_____	x \$20 =	_____
<input type="checkbox"/> Banquet.....	_____	x \$60 =	_____
<input type="checkbox"/> Sam Adams Lunch.	_____	x \$35 =	_____
<input type="checkbox"/> Delegates Pkg.	_____	x \$10 =	_____

(badge, bylaws, platform)

Total.....

Los Angeles for...
**California's
CONVENTION**

nia

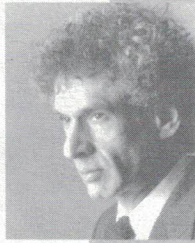
Around the State

News and events from LP regions all over California

Marin County:

Region Reactivates

After a lengthy hibernation, Marin County (R21) is back! The region has recently reactivated — thanks to the enthusiasm and dedication of several local activists.



Michael Edelstein

One of the primary forces to start the ball rolling was **Michael Edelstein, Ph.D.**, a resident of Marin and author of "Three Minute Therapy." "I contacted [Northern Vice-Chair] **Jon Peterson** and asked for help," he reported. "Jon told me that another Marin resident, **Tammy Austin**, was also interested. We set up an organization meeting at a Mill Valley restaurant, and I invited as many local Libertarians as I could find."

The group's first meeting took place in September. At their November meeting, Jon Petersen presided, and appointed **Jeffrey Sommer** as Deputy Northern Vice-Chair to help the Marin Libertarians re-organize. As one of its first acts of business, the fledgling region elected new officers: Tammy Austin (Chair), **Janice Edelstein** (Vice-Chair), **Matt Turley** (Secretary) and **Richard Lowry** (Treasurer). Soon after, they were off and running.

"On January 31, we held a garage sale to raise money for our treasury," reported Austin. "We now have an info booth at the local Farmers Market, which happens every Thursday at the San Rafael Civic Center. And we're planning to co-sponsor another booth with Sonoma County (R49) at the Petaluma Flee Market, beginning this month."

Austin continued: "Upstarts that we are, we're still forming committees to map our future. Right now our focus is on

planning for the LPC Convention. With Jeffrey Sommer's help, we're organizing a meeting of neighboring regions to discuss statewide issues." Austin is referring to the Northern California Multi-Regional Conference, scheduled for January 17. Details of the meeting are unavailable at press time, but all of Marin's convention delegates will attend; other regions planning to send representatives include Sonoma County, East Bay (R01), Sacramento (R34), Yolo County (R57), San Francisco (R38) and San Mateo (R41).

"One of my goals is to bring a more unified presence to the Northern California LP," said Austin.

Newsletter-wise, Marin County currently "piggybacks" with East Bay by contributing news and articles to their publication, *Libertarian Lifeline*. The new region has also established its own website, which can be found at www.lp.org/ca/marin.

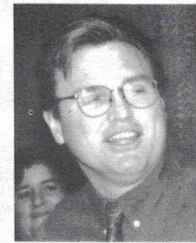
Marin County residents who would like to become active in their region can contact Tammy Austin via e-mail at MarinLP@webtvnet, or by calling (415) 331-1500 x139.

Placer County:

Here Comes "The Gang"



Thanks to the efforts of Placer County (R31) activist **Mark Blackburn**, "The Libertarian Gang," a popular cable television show produced by the Sacramento LP (R34), recently began airing on Roseville cable channel 8. The longest-running Libertarian program on cable TV, the series has been a regular fixture in Sacramento since its premiere in March, 1991.



Michael McHale

"The Libertarian Gang" is produced and hosted by **Michael McHale**, a Sacramento high school teacher and LPC activist. Styled after mainstream talking head shows like "The McLaughlin Group" and "The Capitol Gang," the format of the series is a roundtable discussion of current issues by local Libertarians.

"The series is a great outreach tool," said McHale. "Our goal is to show that freedom and responsibility are not frightening concepts."

Fresno County:

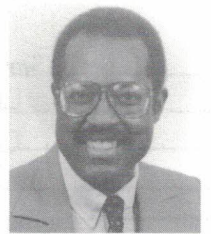
Region Chair on Talk Radio Show

Region 10 Chair **Rodney Austin** appeared on a Fresno radio station, KFRE AM-940, on December 15. Austin was the guest of the Kenneth Kay Show, "the fastest two hours in radio."

Austin fielded questions from approximately fifteen callers from Modesto to Bakersfield over the two-hour interview. According to Austin, "Topics included drugs, crime, drugs, separation of church and state, drugs, taxes, drugs, the death penalty, drugs, guns, drugs, the two-party system and drugs."

The appearance came about when Austin offered himself as a guest after hearing Kay host Republican and Democratic representatives on earlier shows. Eager to provide his audience with the Libertarian perspective, Kay accepted Austin's offer.

Kay said that upon reading Harry Browne's 1996 Presidential Platform, he anticipated the show featuring an LP representative as much as any show he'd done. He also invited Austin to return for another appearance in the future. ■



Rodney Austin

Rider Enters "Winnable" Race

(continued from page 1)

LPC's most active and publicly visible members. A check of the *San Diego Union-Tribune* finds his name in about 150 stories and letters to the editor in 1997, far more than any of his opponents. And, aside from the editorials in the *U-T*

denouncing him, the stories have been generally positive as to his role as defender of the taxpayer.

Illustrating Rider's influ-

ence in his community, the candidate recently refused an offer of \$100,000 from the San Diego Port Tenants Association to stop commenting publicly on the city's \$214 million tax-funded convention center expansion project. "Essentially, they wanted me to drop all opposition to the convention center deal," he said. He went on to say that "there was no way in the world" he would accept such an offer and promised to continue his fight to put the project to a public vote.

Rider's refusal of the bride netted headlines in the local newspapers, which have also described him as the "Most Feared Man in Town" when it comes to opposing government spending. Far from achieving its desired effect, the controversy further cemented Rider's image as a man to be reckoned with in San Diego politics.

Last year, Rider filed a lawsuit which stalled construction on the convention center expansion. He has also threatened to back a referendum to allow city residents to vote on the bonds the city wants to issue to pay for it.

"When this Libertarian activist scowls, San Diego's power brokers are so shaken you can pick up the tremors on the Richter scale," wrote Peter Rowe in the *San Diego Union Tribune*.

As to whether his campaign for

Treasurer will benefit the Libertarian Party, Rider says: "I'm sure it will. If you read the newspaper, you might think 'Richard' is my middle name and 'Libertarian' is my first! Almost all the stories identify me with the party, and that is just the way I like it."

If Rider succeeds, it would be the biggest office a California Libertarian has ever won: San Diego County is larger than the state of Rhode Island and has

population of 2.7 million. "San Diegians might not want me to run the border guard operation," he says, "and I'd make a lousy drug

Czar. But if the people want a tight-fisted S.O.B. to watch their money, I'm their best choice!"

Rider says anyone interested in supporting his campaign with donations should do so soon: he must pay the \$6,500 ballot fee in February. Send checks (payable to "Rider for County Treasurer") to Richard Rider, 10969 Red Cedar Dr., San Diego, CA 92131. ■

Manny Klausner to Speak

(continued from page 3)

LPC state chair, Dean served as a Senior Advisor to the Harry Browne for President campaign during the last election.

Since its founding in 1981, the Sam Adams Society has provided recognition to Libertarian candidates and activists at those conventions immediately following elections. Following non-election years such as this, the program features speakers who will provide encouragement and inspiration to all party activists.

The Sam Adams Luncheon is part of the regular convention program; all convention-goers may attend. To purchase tickets, contact convention organizer Laura McFadden at (562) 428-8113. ■

Snuffing Property Rights

(continued from page 5)

the time to stand firm, to restate that America was founded with protections on the right of private property.

That's when Hedgecock began arguing against property rights: "If you want to sell your body, or hire people to sell their bodies...You can't do that, right?" I said that those who believe in property rights should support such body-oriented rights as well, even if they are offended by the decisions made by others, because everyone's body is their property.

Later, I realized what that conservative talk show host had revealed. He was saying, in effect, that he had not "lost" the battle over property rights; he had chosen not to fight it. He was admitting that he didn't want to have anything to do with the slippery slope of property rights, because some liberal would eventually figure out that his body could be covered by that same logic — and demand the freedom to sell it, pollute it, euthanize it, or any number of other things that conservatives find morally reprehensible.

At last, I understood why property rights have disappeared from the political dialogue. The left has never favored private property rights, and the right has abandoned them to avoid making concessions on personal freedom issues.

So, to right-wing smokers, I say: Smoke at home where you belong! If you won't support freedom for others, then reap the rewards of your own making. You've asked for it. And, to the lefties, smokers and otherwise, I say: Politicians may pay lip service to your personal freedom concerns, but if you truly want to be in charge of your own destiny and body, then the best thing you can do is to give control back to that man with the cigar in his mouth in that dive bar. And give it back based upon his property rights.

You can't have control over your bodily property without granting others control over their non-bodily property.

Dan Litwin is a resident of San Diego and a member of Region 37. ■

For Your Information

Renewing Your Membership

Renewal notices are sent to members whose expiration date is coming up. Just return your dues payment in the accompanying envelope and your membership at the national, state, and local level will be renewed for one year. Please respond to renewal notices promptly so we don't need to send additional reminders — every additional notice costs money we could otherwise use to grow the party!

Address Changes

Be sure to let us know if you move! Send your address change notice to the national office so that your newsletters and other important correspondence can be sent to your new address. If you are moving out of state but want to continue as an LPC member or continue subscribing to *LPC Monthly*, please also notify the state office so we can make the necessary arrangements to keep you on our list.

Special Requests

If you need some special update to your membership records, such as a change in region affiliation, please contact the state office.

Address Labels

The address label on your copy of this newsletter provides important information relating to your membership records. On the top line of the label, you will find a six-digit number. Please mention this number in any correspondence relating to your membership.

On the same line you will also find a two-digit number identifying the LPC region with which you are affiliated. (If you are not a member but are receiving the newsletter for some other reason there will be a two-letter code instead.) See the listing on page 11 to find out the name of your region and who to contact for information about local activities.



Announcements

1999 Convention Bids

The LPC Excom announces that it is now officially accepting bids from contractors interested in organizing the 1999 LPC Convention. Traditionally, conventions alternate between Southern and Northern California locations; because the 1998 Convention will be held in Los Angeles, the committee would prefer a Northern California site for the 1999 Convention. However, all bids are welcome. Interested parties should submit their bids to LPC Chair Mark Hinkle, 655 Lewelling Blvd. Ste. 362, San Leandro CA 94579-1844.

Candidates Needed

It's not too soon to plan for the 1998 election! Libertarians are needed to run for U.S. Congress, State Senate and State Assembly throughout California. Filing starts in January, but we need to plan ahead. If you are interested in running for public office as a Libertarian, or if you would like to volunteer to assist the campaign of another candidate, contact the LPC's Candidate Coordinator, Ted Brown, by telephone at (818) 286-7817, or via e-mail at <tedb@mail.idt.net>.

Bylaw Changes

You now have the chance to put in your two-cents about the LPC Bylaws. Don't like some of the provisions? Tell it to the Bylaws Committee! Send your proposal(s) to one or more of the committee members at least one week before the start of the convention. All submissions received by then will be considered. The Bylaws Committee members are Joe Dehn, Linda Grau, Jon Petersen, Terry Savage and Bob Weber. To contact them, see their listings elsewhere on this page. The sooner you send your proposals, the better the committee will be able to review them.

LPC OFFICERS

Chair

Mark Hinkle
V-Mail: (408) 243-2711
Fax: (408) 778-1115
E-Mail: chair@ca.lp.org

Northern Vice Chair

Jon Petersen
141 Hays Ave.
San Jose, CA 95123
Phone: (408) 229-1726
Fax: (408) 972-1515
E-Mail: jon_petersen@earthlink.net

Southern Vice Chair

Bob Weber
3861 Mentone Ave. #44
Culver City, CA 90232
Phone: (310) 204-0612
E-Mail: 10445.3235@compuserve.com

Treasurer

Eric Fine
350 Reeves Dr. #303
Beverly Hills, CA 90212
Phone: (310) 836-0276
Fax: (310) 552-9761
E-Mail: DOCFINER@aol.com

Secretary

Elizabeth Brierly
141 Innovation Drive #4102
San Jose, CA 95134
Phone: (408) 272-3191
E-Mail: secretary@ca.lp.org

LP OFFICES

National Headquarters

The Libertarian Party
2600 Virginia Avenue NW, Ste. 100
Washington, DC 20037
Phone: (202) 333-0008
Fax: (202) 333-0072
E-Mail: hq@lp.org

State Headquarters

The Libertarian Party of California
655 Lewelling Blvd., Suite 362
San Leandro, CA 94579-1844
V-Mail: (408) 243-2711 x 33
E-Mail: office@ca.lp.org

Regional Contacts

See page 11.

EXECUTIVE COMMITTEE

Regional Reps

Joseph W. Dehn III (Santa Clara)
Phone: (650) 858-1842
E-Mail: jwd3@dehnbase.fidonet.org

Mark Murphy (Orange County)
Phone: (714) 458-1911
E-Mail: markm@mail.tyrell.com

Juan Ros (San Francisco)
Phone: (818) 980-8833
E-Mail: juan@myself.com

Jeffrey R. Sommer (East Bay)
Phone: (510) 537-3212
E-Mail: Terry.Floyd@cmnsens.fidonet.org

Philip Zoebisch (San Diego)
Phone: (619) 280-1776
E-Mail: zoebisch@juno.com

At-Large Reps

Ted Brown
Phone: (626) 286-7817
Fax: (626) 286-7837
E-Mail: Tedb@mail.idt.net

Mary Gingell
Phone: (415) 858-1842
E-Mail: Gingell@dehnbase.fidonet.org

Gail Lightfoot
Phone: (805) 481-3434
Fax: (805) 481-9083
E-Mail: GKLTft@aol.com

Terry Savage
Phone: (415) 691-6272
E-Mail: ZAPTCS@aol.com

José Castañeda (Alternate)
Phone: (562) 862-9152
E-Mail: LPCLaVc@aol.com

Joe Farina (Alternate)
Phone: (916) 423-4663
Fax: (916) 685-6882
E-Mail: johnhen@cwo.com

Next Month:

Full Coverage of
the LPC's 1998
Convention!

REGIONAL CONTACTS

Antelope Valley (R68)

Contact: Eric Fussell
Phone: (805) 947-8101

Del Norte (R08)

Contact: Pat Sherry
Phone: (707) 465-1727
E-mail: patrick@ns1.tlk.net

East Bay (R01)

Chair: Douglas J. Ohmen
Phone: (510) 820-0812

El Dorado/Alpine (R09)

Contact: Fred Rouse
Phone: (916) 622-8008

Fresno (R10)

Contact: Rodney K. Austin
Phone: (209) 255-5561
E-Mail: rkaustin@cybergate.com

Gold Country (R03)

Chair: Gary Hines
Phone: (209) 736-4916
E-Mail: emulvany@mlode.com

Humboldt (R12)

Contact: Fred Mangels
Phone: (707) 443-6568
E-Mail: freddyM@wcinet.net

Imperial (R13)

Contact: Martin Castro
Phone: (619) 344-7722

Inyo/Mono (R26)

Chair: Bill Baucum
Phone: (760) 878-2288
E-Mail: baucum@panix.com

Kern (R15)

Chair: Ryan Gifford
Phone: (805) 589-8734

Lassen (R18)

Contact: Bonnie Rutherford
Phone: (916) 251-6709

Long Beach (R66)

Chair: Laura McFadden
Phone: (562) 428-8113
E-Mail: LauraMcF@aol.com

Los Angeles County

Chair: Bob Weber
Phone: (310) 204-0612
E-Mail: 10445.3235@compuserve.com
Web: ourworld.compuserve.com/homepages/Kit_Maira

Los Angeles/Central (R64)

Chair: Pam Probst
Phone: (213) 257-3207
E-Mail: pprobst@primenet.com

Los Angeles/S.E. (R65)

Chair: Rodger Rosie
Phone: (562) 865-4089
E-Mail: defend1776@aol.com

Los Angeles/West (R62)

Contact: Mike Binkley
Phone: (310) 470-7935

Marin (R21)

Contact: Tammy Austin
Phone: (415) 331-1500 x139
E-Mail: MarinLP@webtv.net

Merced (R24)

Chair: Art Cassretto
Phone: (209) 667-5286

Napa (R28)

Contact: Bill Crain
Phone: (707) 224-5535

Nevada (R29)

Chair: Gary A. Dusseljee
Phone: (916) 478-1776

North Coast (R17)

Contact: Emil Rossi
Phone: (707) 895-3261

Orange County (R30)

Chair: Richard B. Boddie
Phone: (714) 540-5053
E-Mail: ter@ix.netcom.com
Web: www.lpoc.org/

Pasadena/Glendale (R63)

Chair: Dennis Decherd
Phone: (562) 949-0595

Placer (R31)

Chair: Priscilla Falconi
Phone: (916) 784-1140

Riverside (R33)

Chair: Jane Henson
Phone: (909) 369-8843
E-Mail: freedom@ez2.net

Sacramento (R34)

Chair: Gene Frazier
Phone: (916) 332-4805
E-Mail: LPSacto@jps.net
Web: www.jps.net/LPSacto

San Benito (R35)

Contact: Steve Gordon
Phone: (408) 636-1296
E-Mail: Vote4Librt@aol.com

San Bernardino (R36)

Contact: Letha Dulaney
Phone: (909) 798-6668
E-Mail: constitution@compuserve.com

San Diego (R37)

Contact: Steve Green
Phone: (619) 562-8705
E-Mail: SteveGLP@aol.com
Web: lumina.ucsd.edu/pub/...sdlp_dir/LP/home.html

San Fernando Valley (R61)

Chair: Juan Ros
Phone: (818) 980-8833
E-Mail: juan@myself.com

San Francisco (R38)

Contact: Mark Pickens
Phone: (415) 255-1906

San Gabriel Vly/East (R67)

Contact: Jerry Johnson
Phone: (626) 355-8851

San Joaquin (R39)

Contact: David Morrow
Phone: (209) 957-6322
E-Mail: dmorrowst@aol.com

San Luis Obispo (R40)

Chair: Gary Kirkland
Phone: (805) 466-2742
E-Mail: gkirkland@thegrid.net

San Mateo (R41)

Chair: Mary Steiner
Phone: (415) 348-2877
Fax: (415) 548-9028
Web: www.california.com/~lpsm/

Santa Barbara (R42)

Chair: Michael Lamboley
Phone: (805) 964-9569
E-Mail: mlamboley@grci.com

Santa Clara (R43)

Chair: Sam Severs
Phone: (408) 243-2711
E-Mail: sam@severs.com
Web: www.lp.org/lp/ca/lpsc.html

Santa Cruz (R44)

Chair: Bill Anderson
Phone: (408) 476-4773
Web: www.scruznet.com/~grzflts/tobin.html

Shasta (R45)

Chair: Allan L. Swain
Phone: (916) 472-3086
E-Mail: fernals@delphi.com

Solano (R48)

Chair: Mike Malin
Phone: (707) 426-0232

Sonoma (R49)

Contact: Jim Oglesby
Phone: (707) 571-7933
E-Mail: lpsonoma@aol.com

Stanislaus (R50)

Chair: Don DeGroat
Phone: (209) 527-1493
E-Mail: EWCHIEF@aol.com

Sutter/Yuba (R51)

Chair: Todd Herman
Phone: (916) 673-2208
E-Mail: LPCREG51@otn.net

Tehama (R52)

Chair: Ross Crain
Phone: (916) 527-2676

Tulare (R54)

Chair: Pamela Pescosolido
Phone: (209) 594-4806
E-Mail: hourglass@earthlink.net
Web: www.valleylibertarians.org

Ventura (R56)

Chair: Saul Rackauskas
Phone: (805) 389-3035

Yolo (R57)

Chair: Eric Lund
Phone: (916) 362-0855
E-Mail: EricSLund@aol.com

To Receive Membership Information

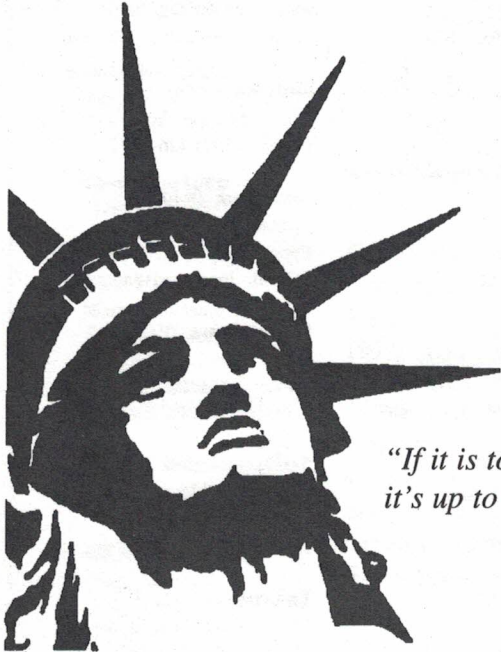
Phone: (800) 682-1776

**Visit the LPC
ON LINE!**



<http://www.ca.lp.org/>

NON-PROFIT ORG.
U.S. POSTAGE
PAID
BURBANK, CA 91505
PERMIT NO. 130



*"If it is to be,
it's up to me."*

DATED MATERIALS
Address Service Requested



655 Lewelling Blvd. #362, San Leandro, CA 94579

Please Print:

Name: _____
Address: _____
City/State/Zip: _____
Phone: _____
E-Mail: _____

The Libertarian Party is the Party of Principle. To assure and affirm that our party never strays from its principles, we request our members to sign the pledge below. (Non-signers cannot vote on party business.)

I hereby certify that I do not believe in or advocate the initiation of force as a means of achieving political or social goals.

Signature: _____

Membership Application

I choose to set my dues at:

- \$25 Basic
- \$100 Sustaining
- \$250 Sponsor
- \$500 Patron
- \$1000 Life

Plus additional contribution to LPC:

- \$ ____ Monthly Pledge
- \$ ____ One-time Donation

Total:

Payment:

- Check (payable to Libertarian Party)
- Visa Mastercard
- Credit Card #: _____
- Expiration Date: _____
- Name on Card: _____
- Signature: _____